

Find the hidden objects



CORAL REEF

Colour in all of the corals. Coral reefs provide homes for many animals. Draw in other animals that you might find on a coral reef.



Australian Government
Great Barrier Reef
Marine Park Authority



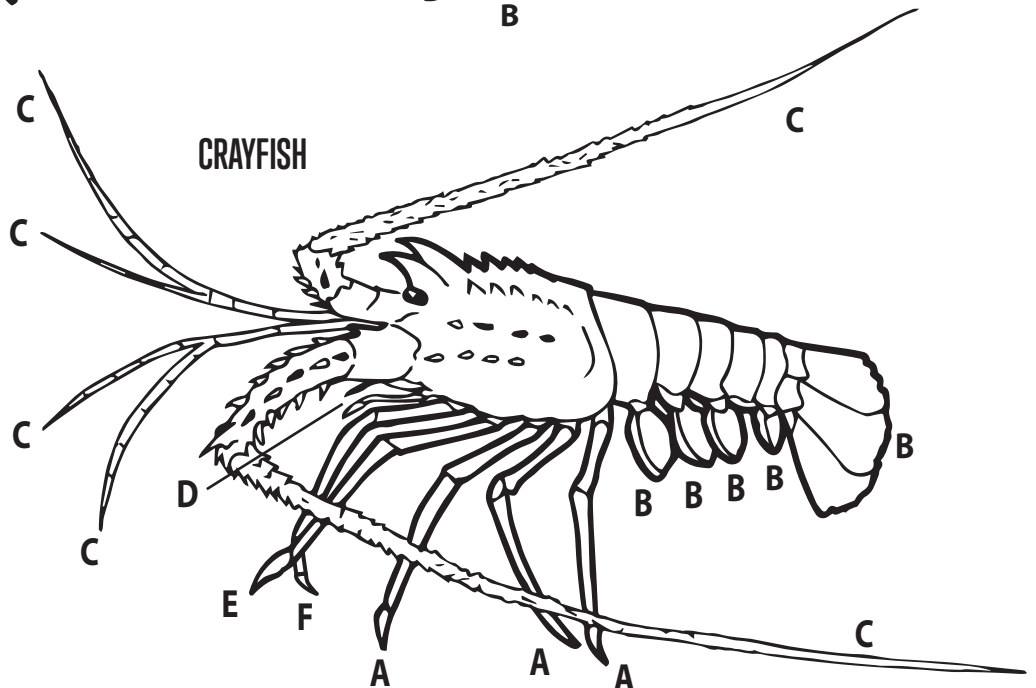
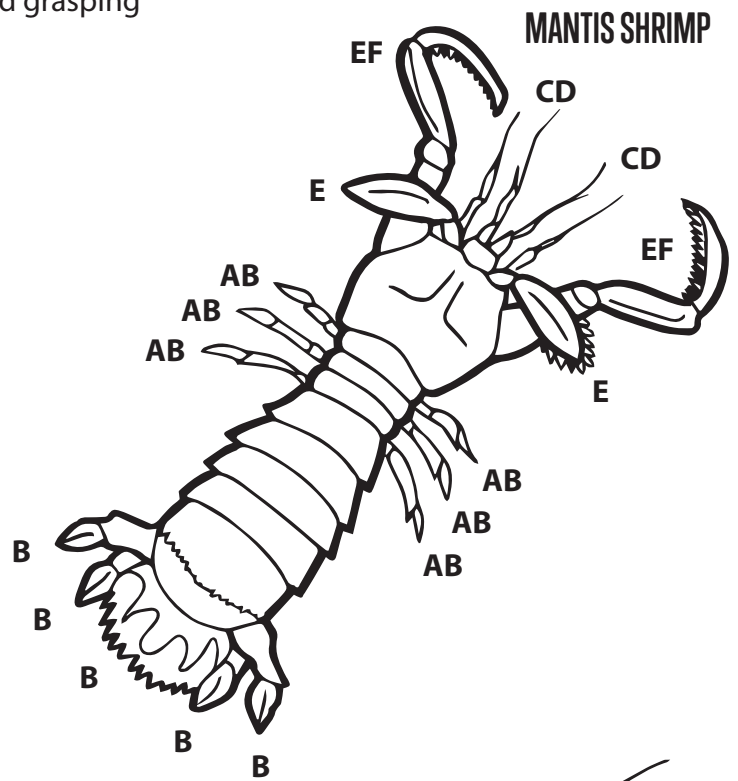
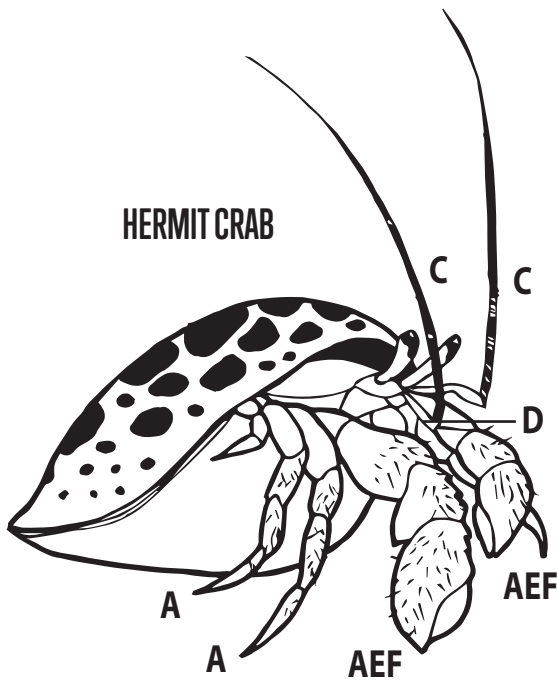
reefHQ
Great Barrier Reef
AQUARIUM

LEGGY CRUSTACEANS

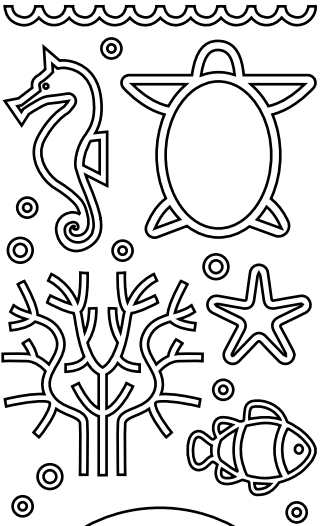
Crustaceans have adapted their jointed, armoured legs so that they can be used not just for walking over sand and coral, but for swimming, feeling, catching and grasping food, holding bunches of eggs and even for shooting backwards.

Using the letters in this table, colour in the legs as indicated and find out uses of the different legs on each of these crustaceans. Some legs may be used for more than one action.

A	=	Red	=	Walking
B	=	Blue	=	Swimming
C	=	Yellow	=	Feeling
D	=	Green	=	Feeding
E	=	Black	=	Catching and grasping
F	=	Brown	=	Defence



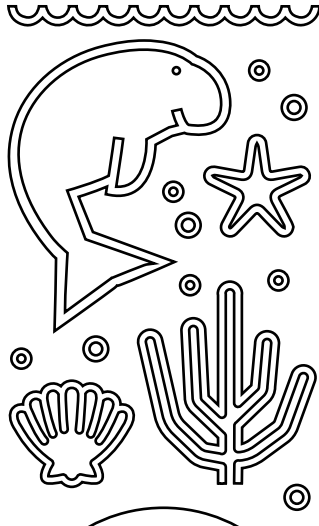
THIS BOOKMARK BELONGS TO



WHAT WILL YOU DO TO
#lovetheReef?

reef guardians

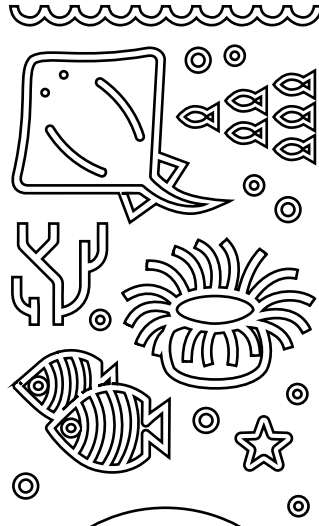
THIS BOOKMARK BELONGS TO



WHAT WILL YOU DO TO
#lovetheReef?

reef guardians

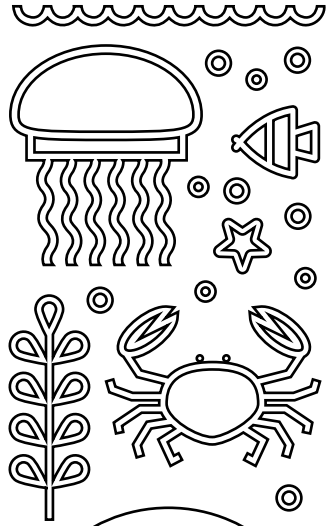
THIS BOOKMARK BELONGS TO



WHAT WILL YOU DO TO
#lovetheReef?

reef guardians

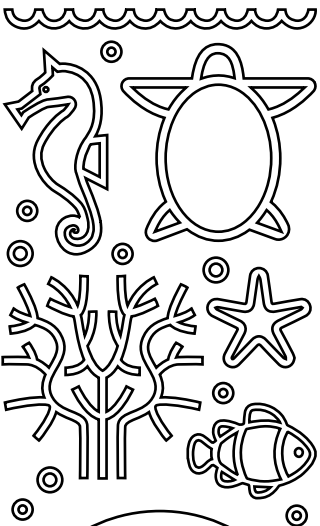
THIS BOOKMARK BELONGS TO



WHAT WILL YOU DO TO
#lovetheReef?

reef guardians

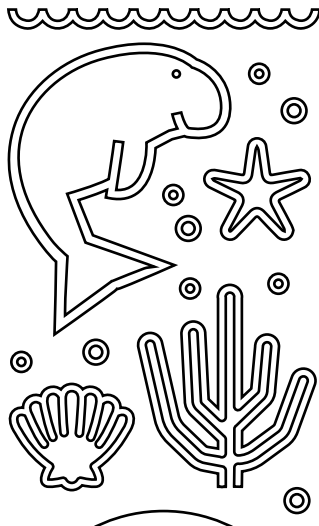
THIS BOOKMARK BELONGS TO



WHAT WILL YOU DO TO
#lovetheReef?

reef guardians

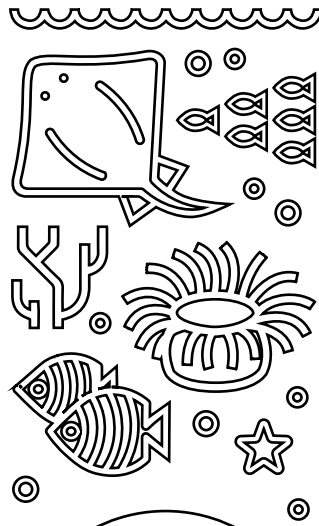
THIS BOOKMARK BELONGS TO



WHAT WILL YOU DO TO
#lovetheReef?

reef guardians

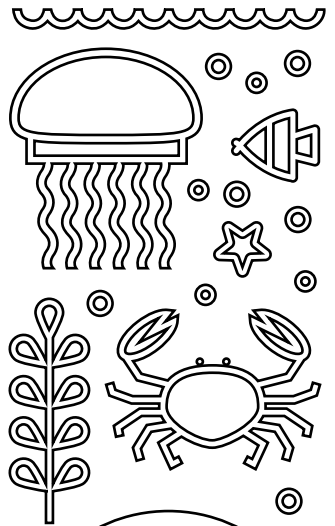
THIS BOOKMARK BELONGS TO



WHAT WILL YOU DO TO
#lovetheReef?

reef guardians

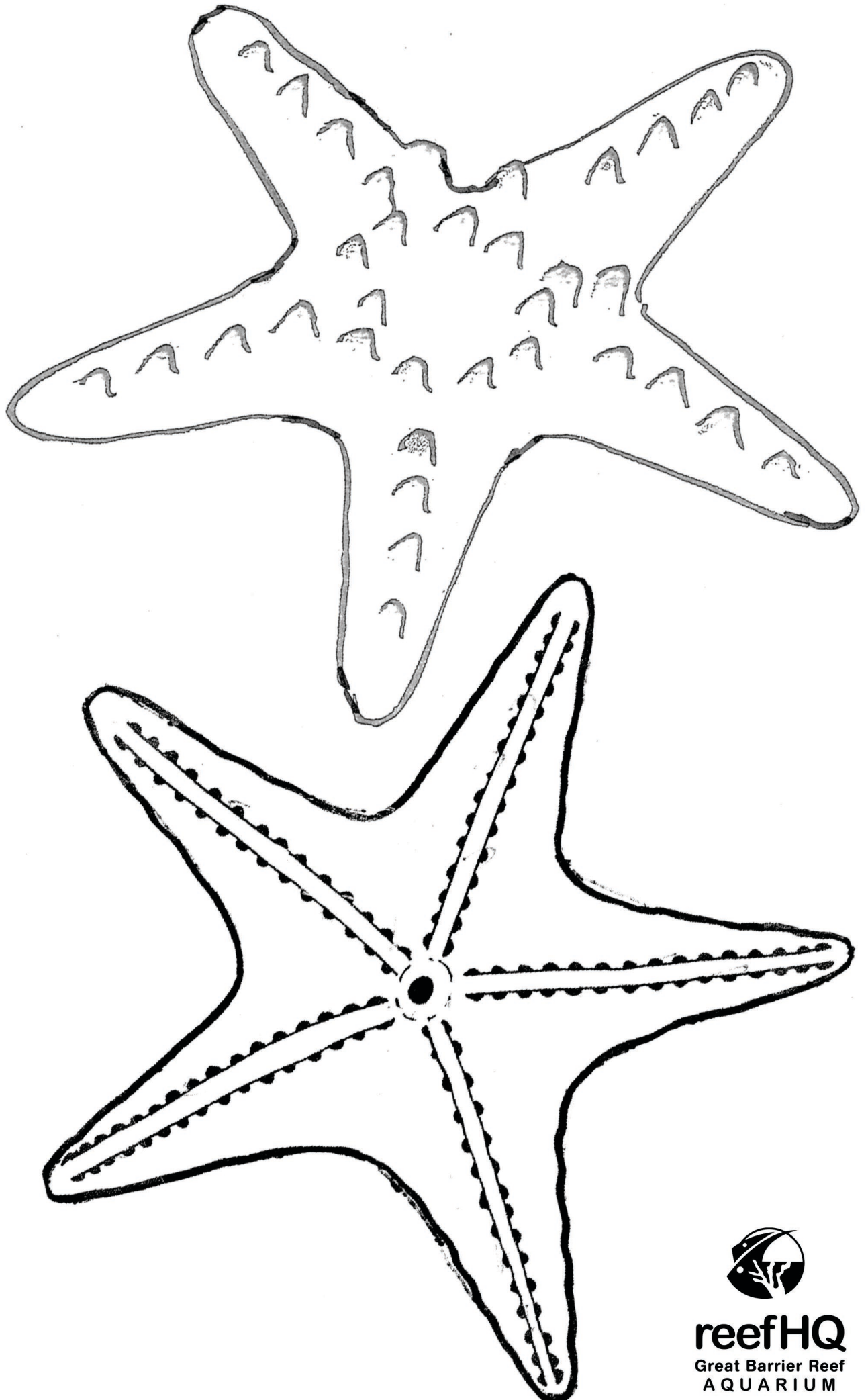
THIS BOOKMARK BELONGS TO



WHAT WILL YOU DO TO
#lovetheReef?

reef guardians

SeaStar - upper and under-side



reefHQ
Great Barrier Reef
AQUARIUM

